

Wall-mounted

KAYF-17 DN4.0 / KAYF-22 DN4.0 / KAYF-28 DN4.0

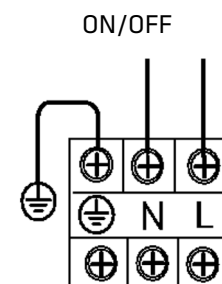
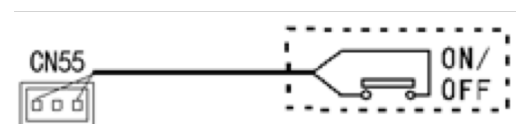
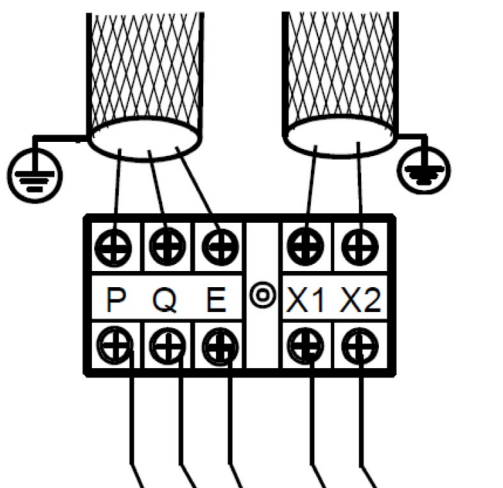

KI-03 S
Recommended controller

 Product certified by: **CE**


FEATURES

Model	KAYF-17 DN4.0	KAYF-22 DN4.0	KAYF-28 DN4.0
Cooling capacity	1,70 kW	2,20 kW	2,80 kW
Heating capacity	2,20 kW	2,40 kW	3,20 kW
Heating power input	28 W	28 W	28 W
Airflow	356/385/411 m ³ /h	356/393/422 m ³ /h	316/370/417 m ³ /h
Sound pressure	29/30/31 dB(A)	29/30/31 dB(A)	29/30/31 dB(A)
Pipe diameter	Ø1/4" / Ø1/2"	Ø1/4" / Ø1/2"	Ø1/4" / Ø1/2"
Drain tube diameter	Ø16 mm	Ø16 mm	Ø16 mm
Power supply	220-240 V / 1 ph / 50 Hz	220-240 V / 1 ph / 50 Hz	220-240 V / 1 ph / 50 Hz
Max. input	15 A	15 A	15 A
Interconnection cable	3x2,50 mm ²	3x2,50 mm ²	3x2,50 mm ²
Com. bus shielded	3x0,75 mm ²	3x0,75 mm ²	3x0,75 mm ²

WIRING DIAGRAM


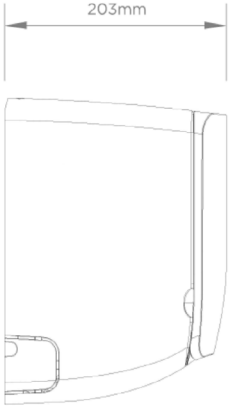


Power supply terminal

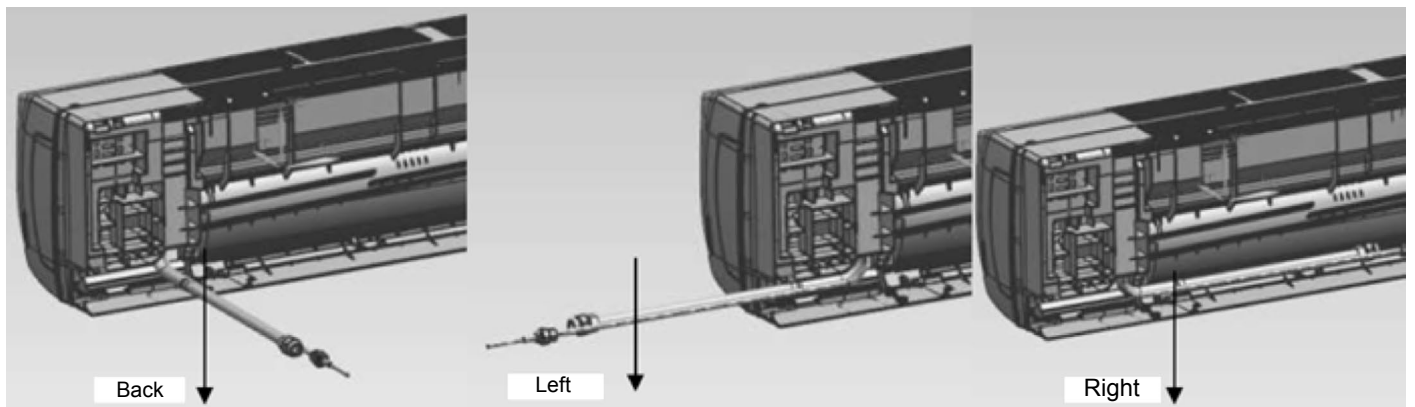
NOTES:

- (1) The data and specifications present in this sheet may vary without notice.
- (2) The images on this sheet are indicative and may be different from the final machine.

DIMENSIONS & WEIGHT

Model	KAYF-17 DN4.0	KAYF-22 DN4.0	KAYF-28 DN4.0
			
Weight	8,40 kg	8,40 kg	9,50 kg

INSTALLATION



Wall-mounted

PRODUCT SHEET

KAYF-36 DN4.0 / KAYF-45 DN4.0 / KAYF-56 DN4.0



KI-03 S

Recommended controller

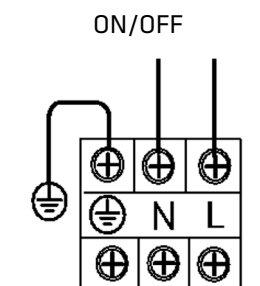
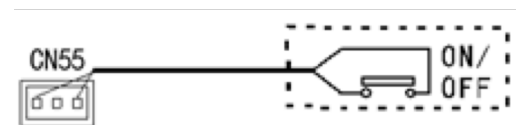
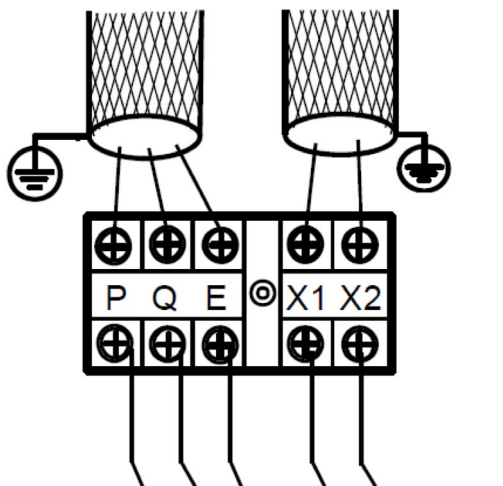
Product certified by: **CE**



FEATURES

Model	KAYF-36 DN4.0	KAYF-45 DN4.0	KAYF-56 DN4.0
Cooling capacity	3,60 kW	4,50 kW	5,60 kW
Heating capacity	4 kW	5 kW	6,30 kW
Heating power input	30 W	40 W	45 W
Airflow	488/573/656 m ³ /h	424/507/594 m ³ /h	547/648/747 m ³ /h
Sound pressure	30/31/33 dB(A)	31/33/35 dB(A)	34/36/38 dB(A)
Pipe diameter	Ø1/4" / Ø1/2"	Ø1/4" / Ø1/2"	Ø3/8" / Ø5/8"
Drain tube diameter	Ø16 mm	Ø16 mm	Ø16 mm
Power supply	220-240 V / 1 ph / 50 Hz	220-240 V / 1 ph / 50 Hz	220-240 V / 1 ph / 50 Hz
Max. input	15 A	15 A	15 A
Interconnection cable	3x2,50 mm ²	3x2,50 mm ²	3x2,50 mm ²
Com. bus shielded	3x0,75 mm ²	3x0,75 mm ²	3x0,75 mm ²

WIRING DIAGRAM

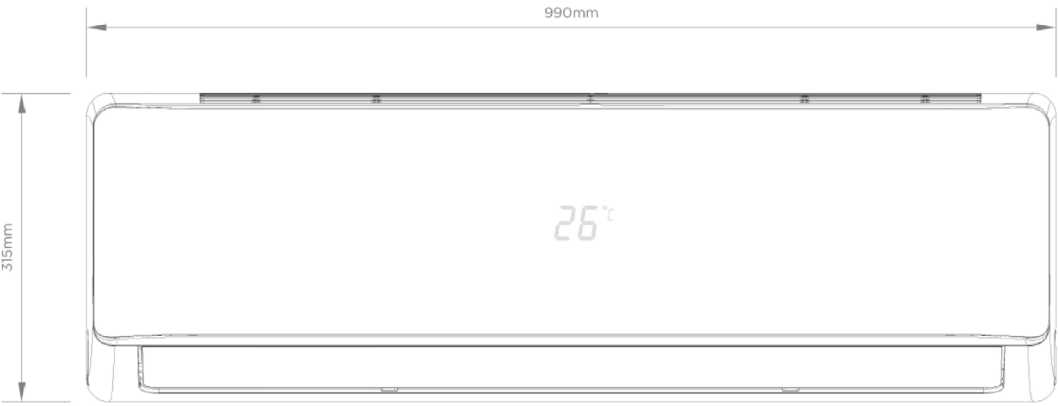
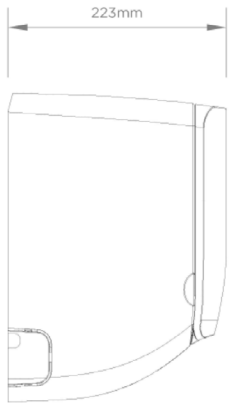


Power supply terminal

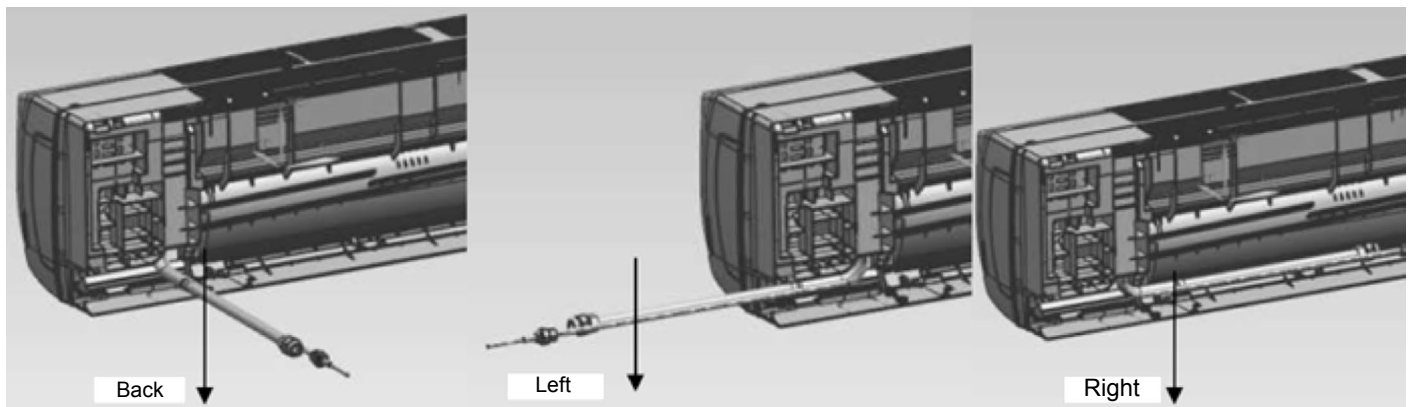
NOTES:

- (1) The data and specifications present in this sheet may vary without notice.
- (2) The images on this sheet are indicative and may be different from the final machine.

DIMENSIONS & WEIGHT

Model	KAYF-36 DN4.0	KAYF-45 DN4.0	KAYF-56 DN4.0
			
Weight	11,40 kg	12,80 kg	12,80 kg

INSTALLATION



Wall-mounted

KAYF-80 DN4.0

PRODUCT SHEET



KI-03 S
Recommended controller

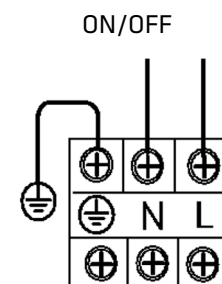
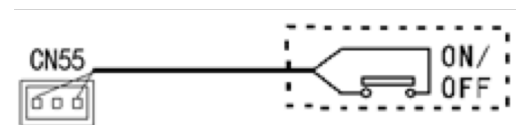
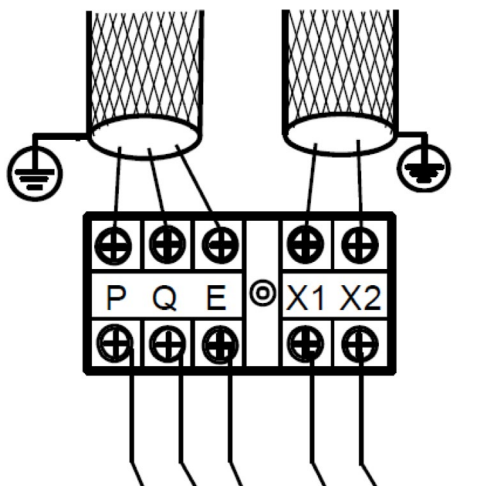
Product certified by: **CE**



FEATURES

Model	KAYF-80 DN4.0
Cooling capacity	8 kW
Heating capacity	9 kW
Heating power input	55 W
Airflow	809/1.005/1.195 m ³ /h
Sound pressure	36/39/44 dB(A)
Pipe diameter	Ø3/8" / Ø5/8"
Drain tube diameter	Ø16 mm
Power supply	220-240 V / 1 ph / 50 Hz
Max. input	15 A
Interconnection cable	3x2,50 mm ²
Com. bus shielded	3x0,75 mm ²

WIRING DIAGRAM



Power supply terminal

NOTES:

- (1) The data and specifications present in this sheet may vary without notice.
- (2) The images on this sheet are indicative and may be different from the final machine.

DIMENSIONS & WEIGHT

Model	KAYF-80 DN4.0
--------------	----------------------



Weight	17 kg
---------------	--------------

INSTALLATION

